

Are You Ready to Right-Size *for the Way YOU Live?*

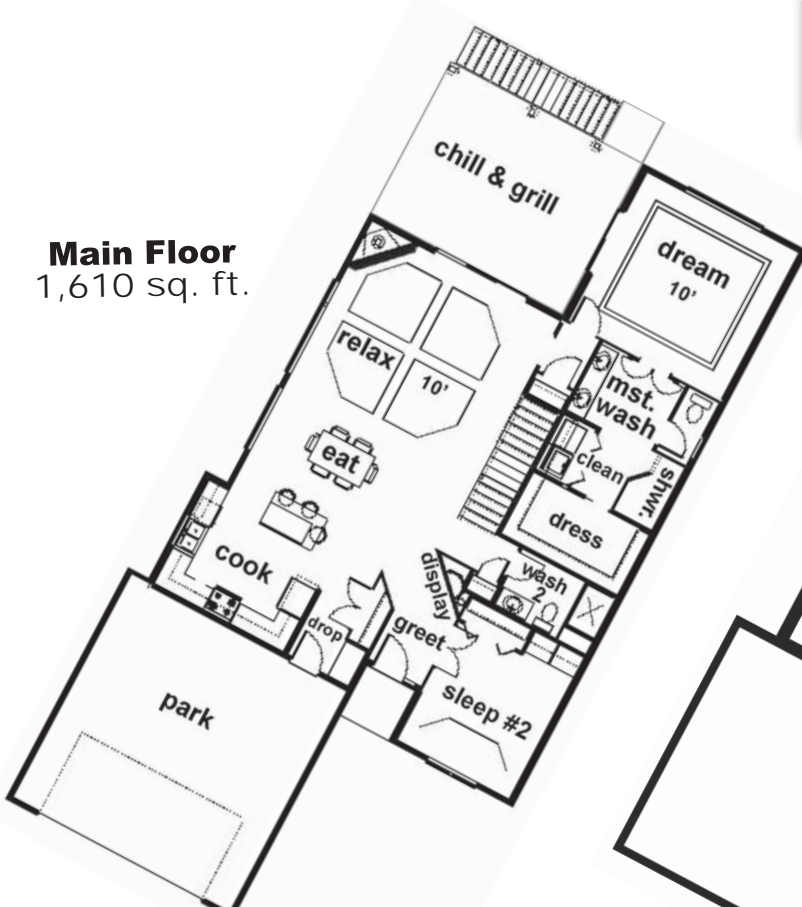
Landmark Performance Home's *Versatile Vision Series*

Whether you are downsizing or just starting out, discover the ultimate **FLEXIBLE** floorplan at a fabulous price. Starting at **\$225,000** you can **CUSTOMIZE** the ranch or one-and-a-half story plan that is perfect for you! Your home will stand apart from the others with **UNIQUE** features and **QUALITY** custom construction.



New Kiltera Villa Plan
Angled for Lake Views
Optional Maintenance-Free Living

Main Floor
1,610 sq. ft.



Lower Level
1,272 sq. ft.



Contact: Steve Faller: 402.670.4821
stevefaller@buildalandmark.com
www.buildalandmark.com



vision
the future is here.