

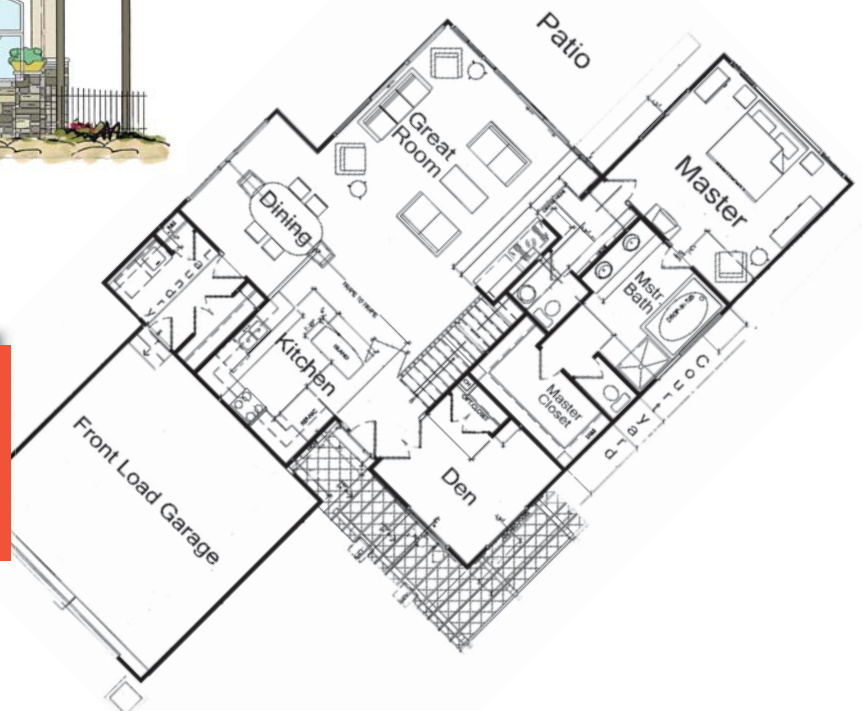
# Are You Ready to Right-Size *for the Way YOU Live?*

## Landmark Performance Home's *Versatile Vision Series*

Whether you are downsizing or just starting out, discover the ultimate **FLEXIBLE** floorplan at a fabulous price. Starting at the **\$150,000s** you can **CUSTOMIZE** the ranch or one-and-a-half story plan that is perfect for you! Your home will stand apart from the others with unique features and **QUALITY** custom construction.



New Kiltera Villa Plan  
Angled for Lake Views  
Maintenance-Free Living



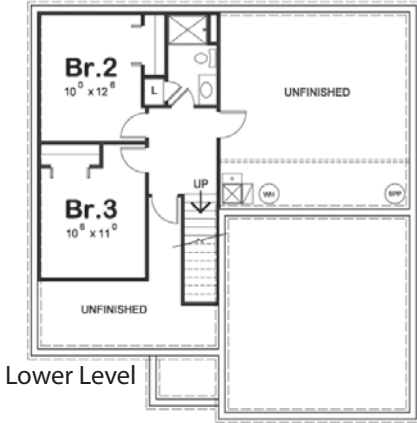
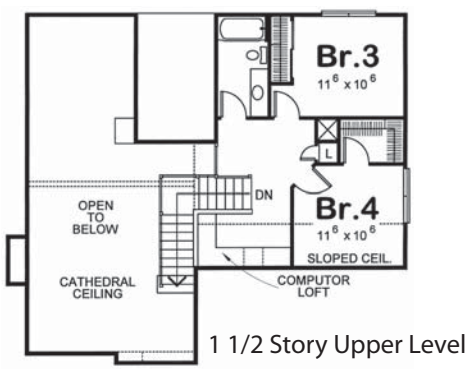
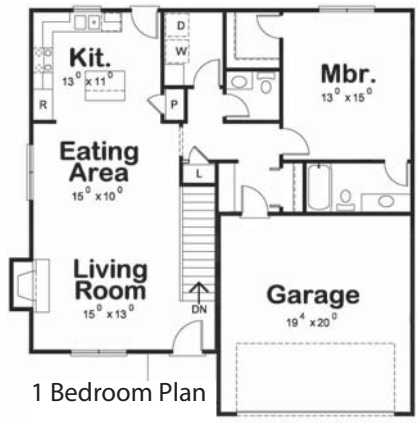
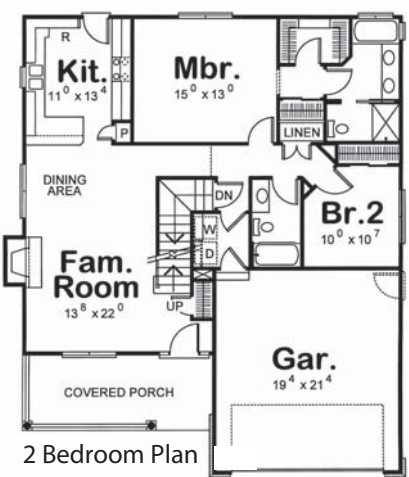
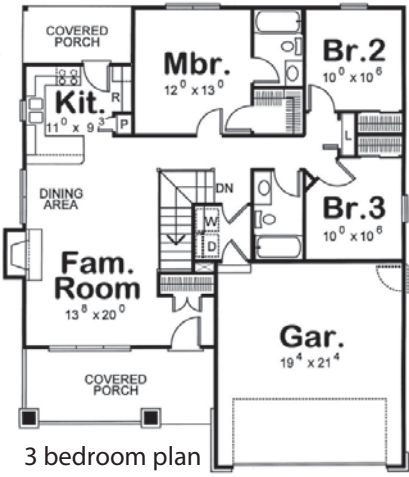
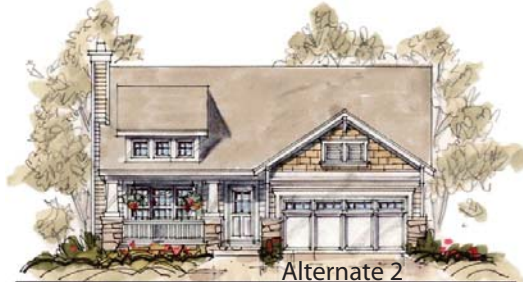
Contact: Steve Faller: 670.4821  
stevefaller@buildalandmark.com  
www.buildalandmark.com



vision  
the future is here.

# Landmark Performance Home's *Versatile Vision Series*

Introducing the ultimate FLEXIBLE floorplan at a fabulous price. Starting at the \$150,000s you can CUSTOMIZE the ranch or one-and-a-half story plan that is perfect for you! Your home will stand apart from the others with unique features and quality custom construction.



Contact: Steve Faller: 670.4821  
 stevefaller@buildalandmark.com  
 www.buildalandmark.com

